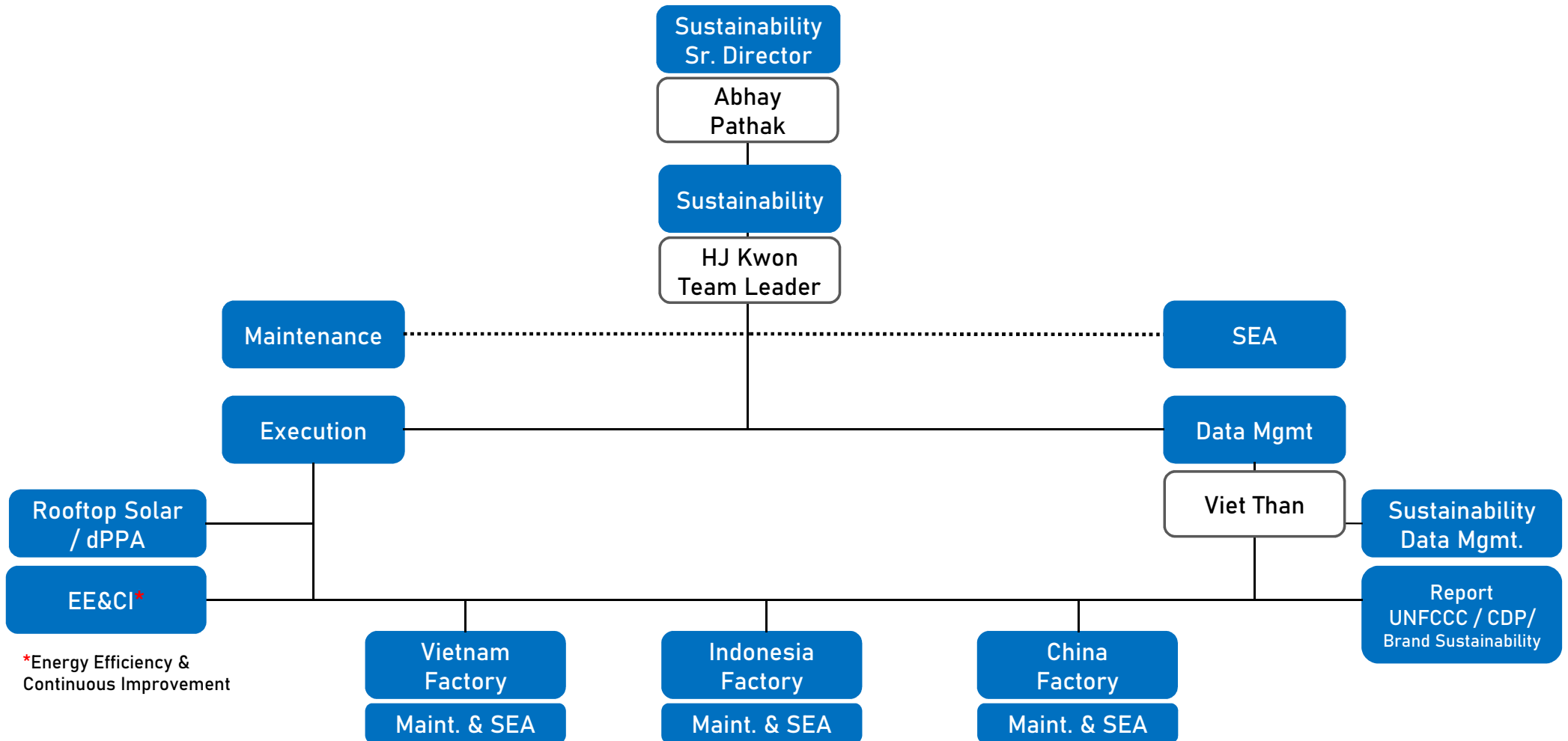


# HSE Sustainability – Org. Chart



## Execution

1. RTS / dPPA Management – All Facilities / 3 Country of Manufacturing
  - ❖ Work with AR and Shire Oak on effective RTS installation with minimal to no Disruption of business
  - ❖ Support DPPA program by supplying relevant electrical usage data as requested
  
2. Continuous Improvement / Energy Efficiency Program – All Facilities / 3 Country of Manufacturing
  - ❖ Active participation of facility energy efficiency program , ideation and implementation
  - ❖ Assist in analysis for GHG emissions reduction and cost or cost savings
  - ❖ Implement improvement plans and hit targets established
  - ❖ To include energy , electricity , waste & water
  - ❖ Analyze incoming data and continually improve

## Data Management

### 1. Sustainability Data Management – All Facilities / 3 Country of Manufacturing

- ❖ Environmental Performance Update – Monthly
- ❖ Permit & Requirement Update- Yearly
- ❖ Chemical List Update - Quarterly
- ❖ Report to Sustainability Board / Top Management
- ❖ Analysis for Factory Energy Usage

### 2. Report – CDP / UNFCCC/ adidas SEA

- ❖ CDP / UNFCCC Policy Update Check
- ❖ CDP / UNFCCC Report Preparation – Yearly
- ❖ Work with Continuous Improvement / Energy Efficiency Team to make a report thoroughly
- ❖ Adidas SEA reporting as required